

INFORM

System Guard

| | |
|----------|---------------------|
| Issue | April 2009 |
| Category | Support Information |
| Content | SystemGuard |
| Use | External |
| Pages | 4 |

What is it?

System Guard is an application from Fujitsu which can be used within Windows to monitor and control temperature, fans and sensors on supported ESPRIMO, SCENIC and CELSIUS Workstations.

Features include:-

- Temperature monitoring
- Fan / Sensor Status Check
- Event logs for keeping check on system status
- Configuring an Ageing Process Check
- Watchdog which can initiate a system reboot in the event the system has hung / is in the frozen state

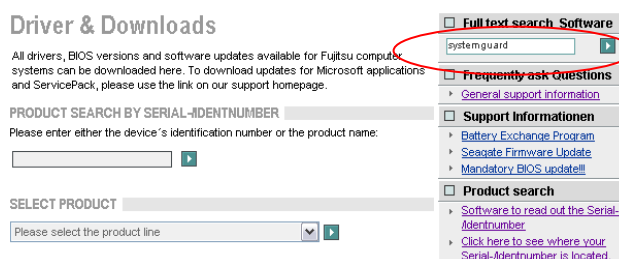
System Guard only supports Windows XP, Windows Server 2003 and Windows Vista™.

Please note: do not run System Guard if you have any other programs running that use the SMBUS Driver, as this will affect the reported values. Also if System Guard installs but when you try to start it for the first time you get a “cannot find SMBUS driver” message, this means your system does not support System Guard.

Where can I get it?

System Guard can be downloaded from <http://ts.fujitsu.com/support/downloads.html>

Type **systemguard** in the full text search box.



How do I use it?

To install System Guard, unzip the downloaded file and then double click the setup.exe. Please follow the on screen installation instructions.

The installation will put an icon on your desktop  which you can double click to launch the application.

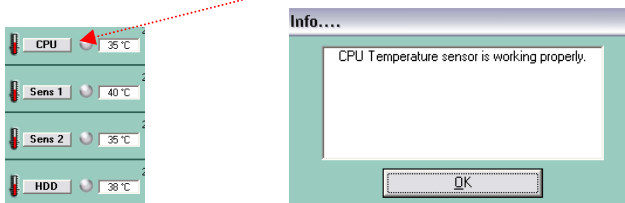
When the installation has completed, System Guard will automatically launch for the first time. It will start by doing a system check during which all the system fans and sensors are tested.

System Guard V3.34

Please note: some of the options within System Guard may be greyed out. This either means that this particular motherboard does not support that feature or the piece of hardware referenced is not present in the system.



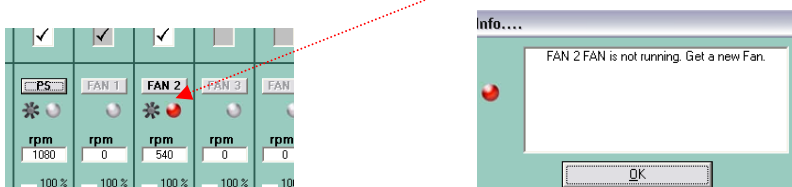
On the left hand side it lists the sensors on the motherboard. If you click on a sensor it will tell you the current status of that sensor. If the light next to the sensor is grey, this means it is working OK. If it is flashing red, there is a problem.



On the right hand side it shows the system fans. Click on a fan to determine the current status.

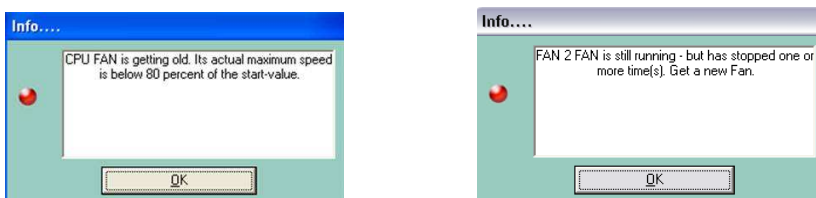


If there is a problem with a fan, the light next to fan will be flashing red. Click on the fan to see the message



By default, System Guard polls the fan and temperature values from the motherboard management controller, every 2 seconds. This does not have any affect on system performance.

If an event or alert is detected, an info message pop up will be produced. These events/alerts are also recorded in the event.log (see below for more information).



Logging Events

You have the option to have the events, alerts and messages either logged to a file, or have them saved to the NT/W2K/XP/Vista Eventlog.

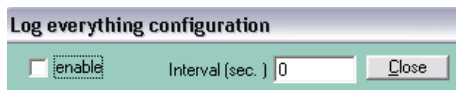
1. Log-Files

Event.log

- This log-file records all **events** and **alerts** as they happen into the event.log
- This log is automatically started as soon as System Guard is installed.
- If you want to start a new event.log, delete the existing event.log in the applications path. System Guard will then create a new one
XP - \AllUsers\ApplicationData\Systemguard, Vista - Program Data\System Guard
- If you have any problems with your system, this is the log-file that the Fujitsu Helpdesk may ask to see

All.log

- This log-file records all measurable **values** at intervals (in seconds) of your choosing. This is particularly useful if you suspect a temperature or fan related problem
- This log is not enabled by default, so if you want to start it, click "Log everything" in the Special menu.



- If you already have an all.log and want to start a new one, delete all.log in the applications path XP - \AllUsers\ApplicationData\Systemguard, Vista - Program Data\System Guard

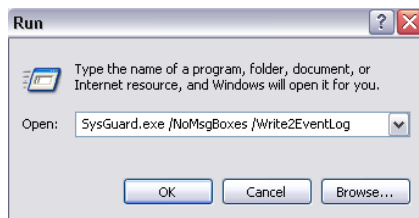
Viewing Log-files

The system menu is where you will find the options to view the created log files.



2. Eventlog

If you would prefer for all events, alerts and messages to be saved to the NT/W2K/XP/Vista Eventlog instead of being saved to a log-file, you need to start System Guard from the run box using the following command line parameters:



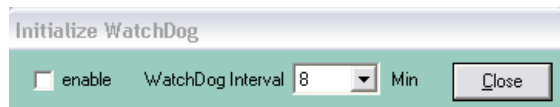
WatchDog

If Windows encounters a software crash, the default behaviour is that Windows will try to restart the computer. However, in some instances it is unable to do this and the system remains in the hung or frozen state.

WatchDog is a hardware functionality of the motherboard management controller, which in such circumstances is still able to initiate a system reboot. When enabled, watchdog waits (for whatever time interval has been configured, between 1 – 8mins) for an "OK" signal from the software. If it does not receive this "OK" signal, it will initiate a system reboot.

To configure the WatchDog, select it from the Special menu.

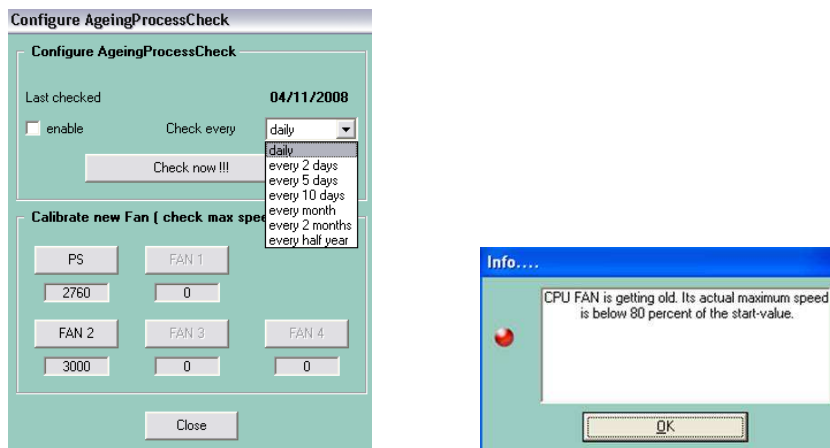
The “Initialize WatchDog” window will open – click the enable check box and choose your time interval in minutes (between 1 and 8 minutes).



Ageing Process Check

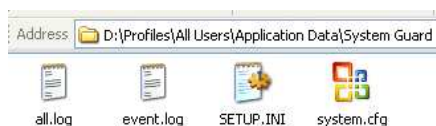
To configure the Fan Ageing Process Check, select it from the “Special” menu.

Click the enable check box and choose how often you want the fans to be checked. You will be notified if a fan is deemed to be failing.



Note: After the failing / faulty part has been replaced, you will still get the System Guard red flashing warning light. To reset System Guard:-

- Close System Guard
- Find the system file *system.cfg*. This is a hidden file and can be found in:
XP - \Profiles\All Users\Application Data\System Guard; Vista - Program Data\System Guard



- Delete *system.cfg* . Next time you start System Guard a new *system.cfg* will be created
- If a new fan was fitted, you then need to calibrate the new fan by clicking the appropriate button in the Ageing Process Check Window. This will ensure the system has a record of the maximum rpm against which to match the ageing process checks.

